

South Cache Medusahead Weed Prevention Area

ISSUE | VOLUME |

WINTER 2011

About the project

The South Cache Medusahead Project was started in 2008 by a group of local landowners concerned with the spread of Medusahead Rye. This invasive annual grass is overtaking many hillsides in southern Cache Valley. A steering committee comprised of local landowners directs the project. With resources from various agencies, mapping, herbicide application, and revegetation are being completed. A part time coordinator oversees the day to day operations of the project.

2011

CALENDAR

Feb. 15: Meeting

July 12: Meeting

July 13: Field Day

Sept. 14-17:
Field School

Sept. 6: Meeting

Sept. 12: Spray

Nov. 1: Seeding

2010 Success

This year the Medusahead Project has seen great success. We sprayed over 1,000 acres in 2010. Areas sprayed averaged 90 percent control. We think this is because of the rainfall soon after the spraying. We also think the added chemical rate and increased water when sprayed has contributed to the success. Some areas were missed due to wind during application. We plan to build on what we've learned and add weapons to our weed control arsenal.

We sprayed again in September and hope we will see the same results from that round of application. In addition to Plateau, other herbicides were sprayed and results will be compared. Read more about this on the back of this newsletter.

Seeding

With help from the Grazing Improvement Program (GIP) and Utah Partners for Conservation and Development we were able to purchase seed. The project's steering committee decided on a seed mix of Intermediate Wheatgrass, Pubescent Wheatgrass, Crested Wheatgrass, Smooth Brome, Alfalfa, Small Burnett,

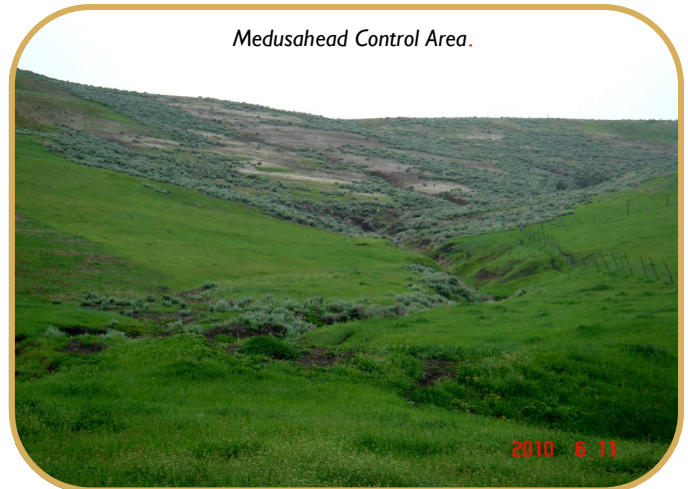
We also seeded the original 880 acres. Seeding results will be monitored in the coming years.

The project continues to recruit new landowners in an effort to control the Medusahead in the county. Medusahead has been identified in all corners of Cache County and the project will need the support of all landowners

with Medusahead infestations. Proactive landowners have been key in combating this invasive weed. The Medusahead Project would not be possible without the input, decisions, and involvement of local landowners.

This has been a great year for the project and we would like to thank everyone involved.

Medusahead Control Area.



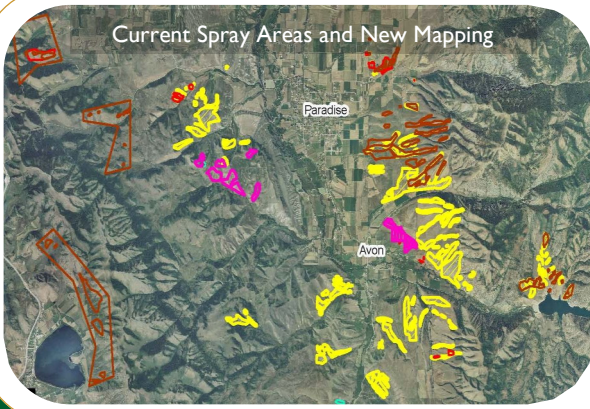
2010 6.11

and Yellow Sweet Clover. This mix was chosen for ease of establishment and vigor in holding, once established, against the extremely aggressive Medusahead.

Seed was applied by rangeland drill, plane, and broadcast. Roughly 500 acres were seeded in fall 2010. The remainder will

be seeded in spring 2011, when construction of the Ruby Pipeline is completed.

The Ruby Pipeline was a potential vector for Medusahead. After working with pipeline personnel, we were able to organize decontamination points to stop the spread of Medusahead seed.



Mapping

We will continue mapping Medusahead infestations in 2011. Ecolife completed the mapping on the west side of the valley. This gives us a clear view of the west, east, and north borders of the infestation. We plan to map the southern border of the infesta-

tion with money from the Utah Department of Agriculture and Food and U.S. Fish and Wildlife Service. A private consulting firm will use satellite images to map large areas in the valley and identify isolated infestations. We will use this mapping to better understand how the Medusahead is spread and to monitor our progress on a large scale.

Thank you for your support controlling Medusahead. This project only succeeds with the interest and leadership of local land owners and support of the various agencies:

Jon White	Roger Pulispher
Wayne Gibbs	Chris Mortenson
Mike Ralphs	Brad Alan
Garth Baxter	Jeff Clawson
Brett Selman	Neil Erickson
Cole Evans	Brad Johnson
Brian Summers	Bruce Pearce
Shawn Summers	Dave Thatcher
J.R. Knowles	Tony Ward
Zan Summers	Val Kotter
Noel Bess	ARS
Alan Curtis	UDAF
David Curtis	NRCS
Larry Parker	USFWS
Phil Olsen	DWR
Tom Nelson	UACD
GIP Partners	
Rosemary Feinstein	
Cache County Weed Dept.	

Test Plots and New Chemicals

Dr. Corey Ransom, Utah State University, has been experimenting with different chemicals to control Medusahead Rye. Test plots are located in the Paradise and Avon areas. Plateau, Matrix, Landmark, and Plateau/Roundup mix were sprayed on the test plots. The tests were conducted with fall (F) and spring (S) applications. Effects on Medusahead, as well as effects on perennial grasses, were monitored.

These tests provide valuable information about chemicals that may have a significant use in controlling Medusahead in the future. Using results from

initial test plots we will direct our efforts to determining the best chemical, or chemical combination, to control Medusahead. Our goal is to find a chemical treatment that will be effective in high density areas

and an alternative treatment for low density areas. Summarized results from USU's test plots are listed in the table below. These findings are only preliminary and are not recommendations.

Herbicide	Time	Rate (oz./acre)	Control %
Plateau	F	6.0	71-65
Plateau	F	8.0	86-79
Plateau	F	10.0	92-84
Plateau	S	10.0	95-94
Plateau/Roundup	S	6.0 + 8.0	99-98
Matrix	F	3.0	60-61
Matrix	F	4.0	70-82
Matrix	F	6.0	81-93
Landmark	F	1.5	99-99
Landmark	F	3.0	99-99

Publicity and ARS Field School

The Medusahead project has had substantial coverage this year through various media outlets including The Deseret News, Ogden Standard Examiner, Herald Journal, National Public Radio, and KSL. This coverage has caught the attention of many Utahans and increased awareness of the issue throughout the state.

The project's success, with the interest and involvement of local landowners, has caught the attention of the Agriculture Research Service (ARS) in Burns, Oregon which partners with Ecologically-based Invasive Plant Management (EBIPM). In 2011, the EBIPM field school will take place in Park Valley, Utah, September 14-17.



Contact Information

Colby Mower 435-851-3255

David Mabey 435-753-5616 x125

Bracken Henderson 435-753-5616 x116