

Logan, Hyde Park and Smithfield Canal

Web Application Tutorial

This tutorial is a guide for those using the Logan, Hyde Park and Smithfield Canal (LHPS canal) web application.

Address:

<http://maps.cachecounty.org/LHPScanal>

Tool Bar:

The Tool Bar is located in the upper right hand side of the web page and is used to:

- Zoom in/out
- Pan the map
- Zoom to full extent
- Back to previous extent
- Forward to extent
- Magnifier
- Identify
- Measure
- Over view map



Links:

Just above the tool bar are the Utah Division of Water Rights website links.

This first link will take you to the main page of the Utah Division of Water Rights. From here you can find information on water rights by number or name.

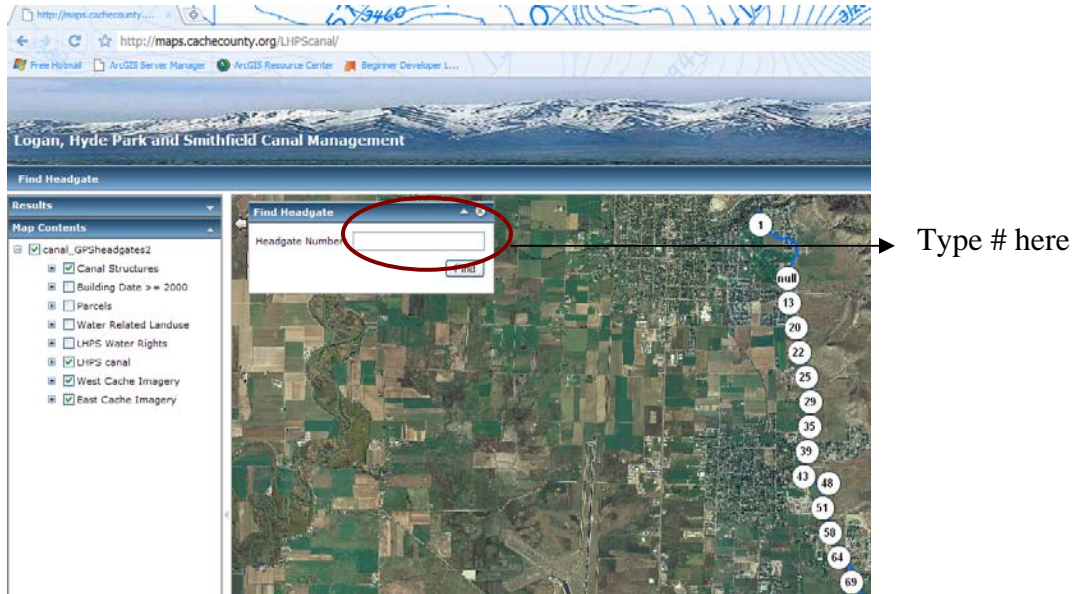


This second link will take you right to the real time system information, displaying the CFSs for diversions from the Logan River.

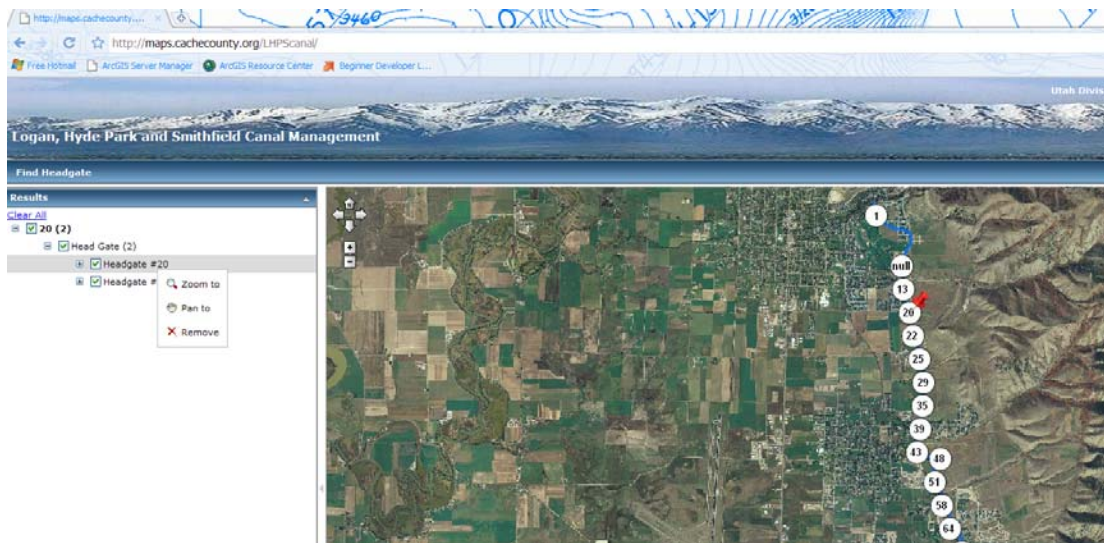
Looking Up Headgates:

There are two ways to find information on headgates; to search or identify.

- To *search* for a headgate, use the “Find Headgate” tool. After selecting this tool a window will pop open, type in the headgate number you are searching for and click “Find.”



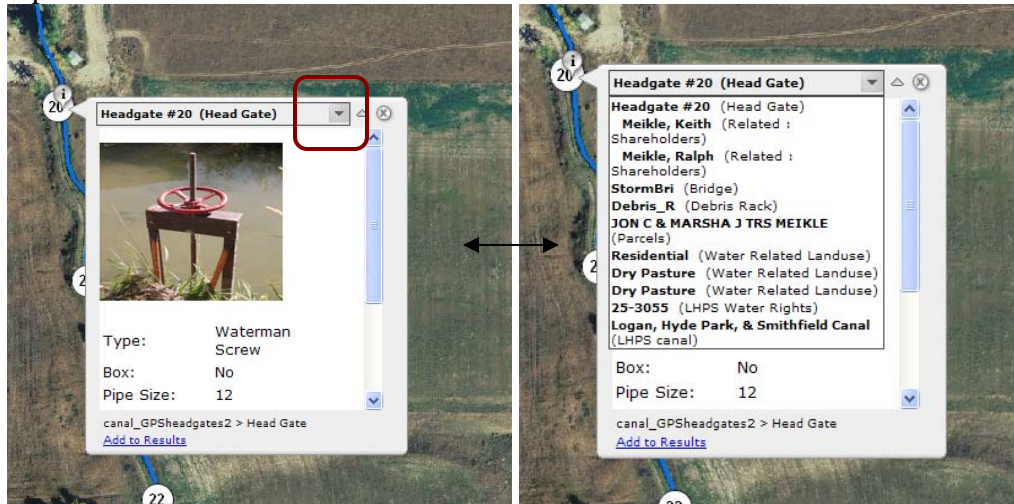
The results from the search will then be placed in the “Results” section on the left side of the page. There may be a couple different headgate options that appear. I typed in 20 and got headgates 20 and 120. This is because it is searching for text, so if I were looking for headgate 2 then all headgates with the number 2 would come up like: 2, 12, 20, 21, 22, 23, 24 etc. (the headgates should be listed numerically). Expand or/and right click the headgate you were looking for and select either “Zoom to” or “Pan to.”



- *Identifying* the headgate is just as easy as searching for it. First zoom into the area you believe the headgate is located. Once you see it, use the “identify” tool to



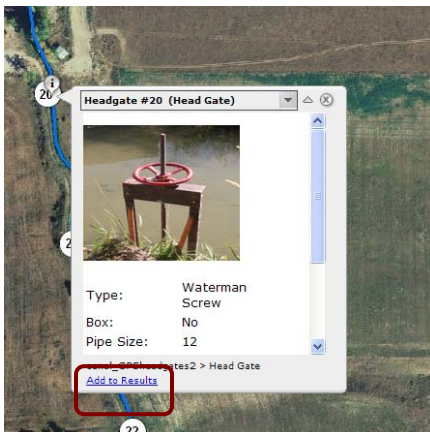
select that headgate and a little window will pop open for you to view the information about the headgate. If it is not selecting the headgate you want you may have to zoom in closer. If you have tried zooming in and it still will not select the headgate you want, use the first drop down arrow that appears on the top of the window.



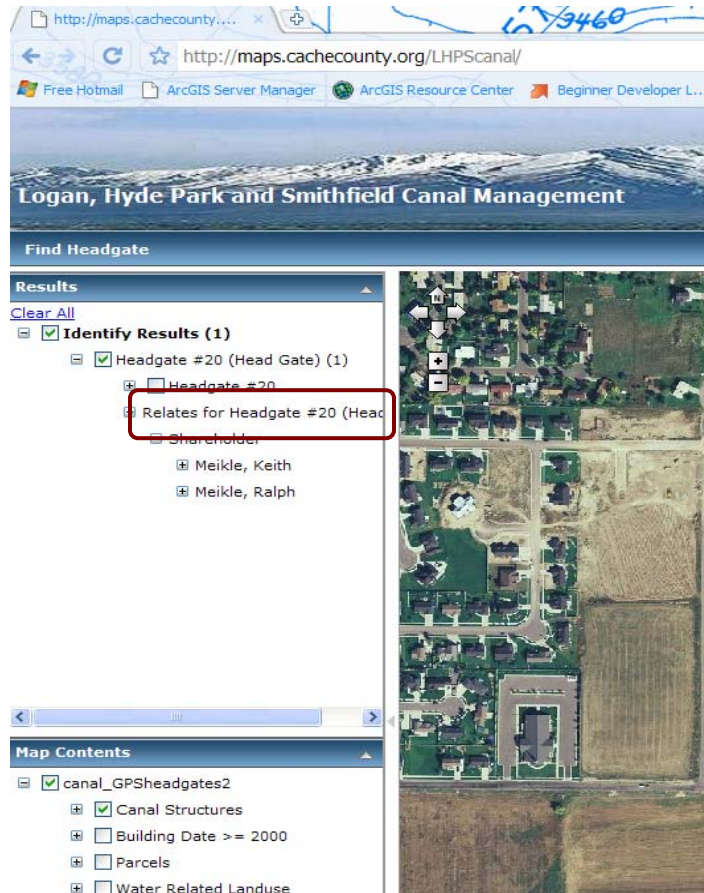
After you select the drop down button you can then search the bolded titles for the headgate you wanted but were unable to select.

Shareholder Information:

Use the Identify tool to select the headgate you would like shareholder information on. Once the window pops open with the headgate information, select the “Add to Results” link at the bottom of the window.



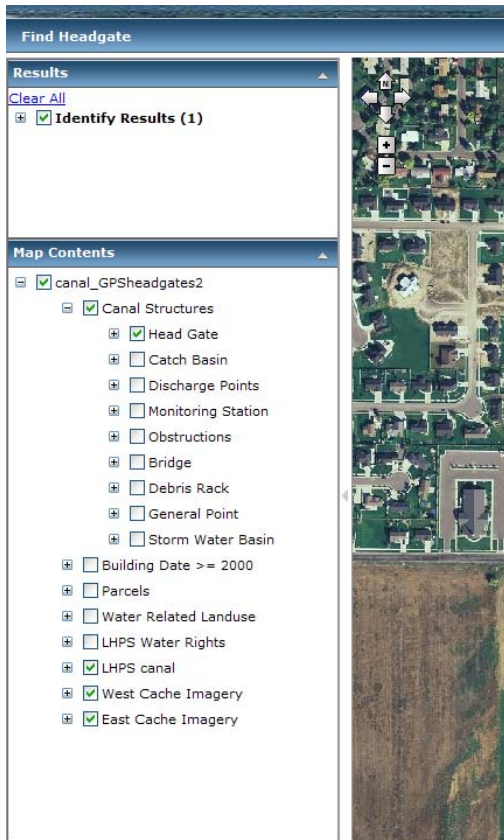
The headgate information should now be in the sidebar window under “Results.” Expand all the “+” signs. Some headgates do not have shareholder information attached to them. When expanding, if an option comes up to expand “Relates for Headgate #(.)” then this headgate has shareholder information. Keep expanding and you will see the shareholders taking shares from this headgate. In this example Headgate #20 has two shareholders: Keith and Ralph Meikle. To find how many shares they are taking from this headgate click the “+” sign next to their name.



Map Contents:

To see other features on this website like: catch basins, discharge points, monitoring stations, obstructions, bridges, debris racks, general points, storm water basins, areas where homes were built later than 2000, parcel information, water related landuse by the AGRC, and the LHPS water rights go to the “Map Contents” section on the left side of

the website. To turn these on, simply check the box next to their name. Identifying these features is similar to identifying headgates. Use the identify tool and click on the area you would like to get information on. If the identify tool will not select what you want try using the first drop down button on the top of the pop up window.

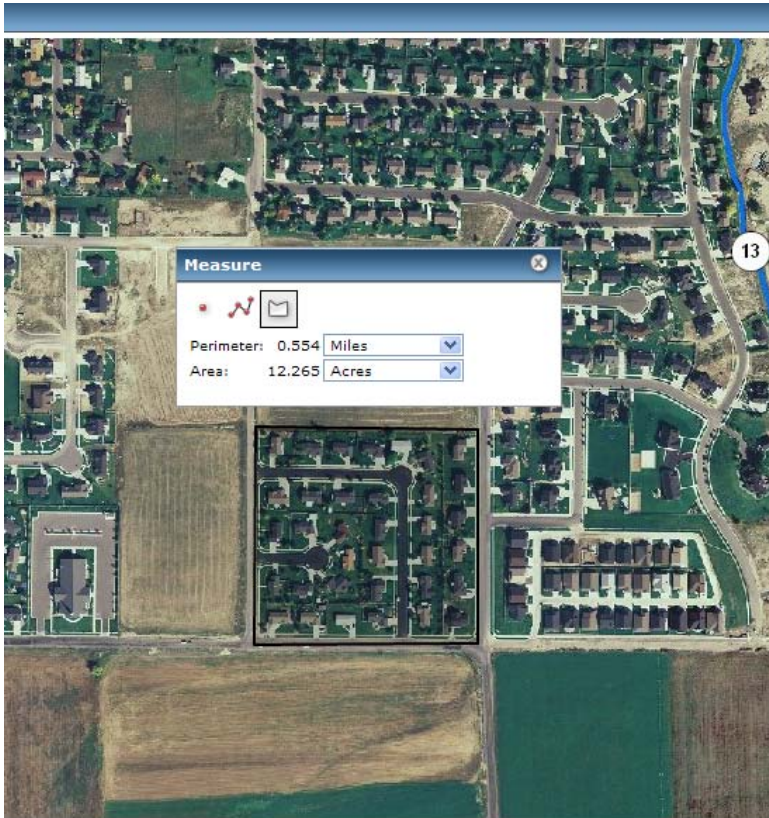


Using the “Measure” Tool:



This tool can be used to measure and area, distance or get coordinates for a point. To measure an *area*, select the “Measure” tool and then click on the polygon figure. The tool will then give you instructions on how to create your polygon. When you are done, double click at your last point. You will then be able to choose how your

information is displayed. In the example below I chose to see the area in miles and acres. These can be changed by using the drop down menu.



NOTE: If the website is on for a long period of time you may have to refresh your connection to get it working promptly and properly.

I hope you find this tutorial helpful.

Whitney Gardner
GIS Specialist
UACD/ Cache County
435-755-1641
Whitney.gardner@cachecounty.org